

Waterproof - TCW450

**Industrial
Application**

Page 31



Product description

Surface / suspension mounted waterproof luminaire suitable for single and twin TL-D 36 Watt and TL-5 28W / 54W.

Designed for applications in demanding operating environments. TCW450 is dust, jet and shock proof luminaire for TLD and TL5 lamps is a perfect solution for moist and dusty conditions. TCW 450 has Polycarbonate housing and cover with all the accessories mounted in a CRCA Gear Plate. The ribbed Polycarbonate cover provides better light distribution. The luminaire offers the flexibility and ease of installation.



TCW 450

TCW 450

TCW 450

Features

- Polycarbonate housing and linear prismatic ribbed cover providing excellent distribution of light.
- Convenient Polycarbonate fastening clips and hinged diffuser to make it easy to replace lamps.
- Ingression protection of IP 65 for protection against dust and water.
- Option of electronic gear to provide flicker free and low cost operations.
- Press fit CRCA gear for ease of maintenance.

Applications

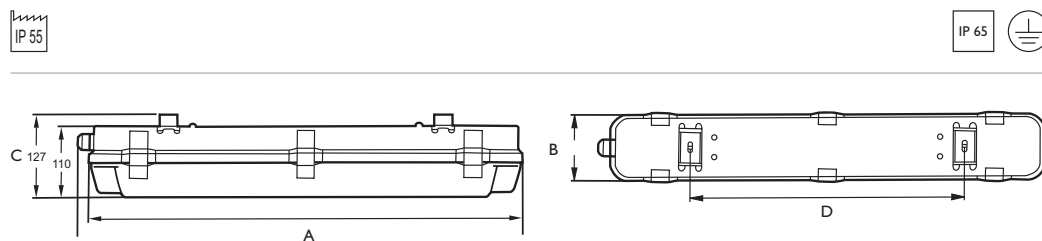
- Industries
- Public parkings
- General interiors
- Dusty and wet environment

Mounting Type

Surface / suspended

Installation

Suitable for surface and suspended mounting with the use of chain.
SS mounting bracket is provided.



Type	Length A	Width B	Height C	Clamp Mounting Distance D
1XTL-D36W	1265	100	95	900
2XTL-D 36W	1265	140	95	900
1XTL-5 28W	1220	100	85	840
2XTL-5 28W	1220	100	85	840
2XTL-5 54W	1220	140	95	900

Technical Drawing

Technical data

Type	For lamp	Nominal voltage (V)	Main current (A)	Nominal power factor
TCW450 1XTL-D 36W EBT	1xTL-D 36W	240	0.15	0.98
TCW450 2XTL-D 36W EBT	2xTL-D 36W	240	0.30	0.98
TCW450 1XTL-5 28W EBT	1xTL-5 28W	240	0.135	0.98
TCW450 2Xtl-5 28W EBT	2xTL-5 28W	240	0.27	0.98
TCW450 P 2XTL-5 54W HF P2953	2xTL-5 54W	240	0.5	0.98

Ordering data

Type	Ordering data	Quantity per box	Dimensions (mm)	Net weight (kg)	Gross weight (kg)
TCW450 1XTL-D 36W EBT	9191 158 10074	4	137X31.5X25	8	10.00
TCW450 2XTL-D 36W EBT	9191 158 10073	4	137X22X25	10.3	12.93
TCW450 1XTL-5 28W EBS	9191 15810041	4	125X22X23	8.3	10.35
TCW450 2Xtl-5 28W EBS	9191 15810042	4	125X22X23	8.4	10.54
TCW450 P 2XTL-5 54W HF P2953	919615810147	4	137X31.5X25	10.4	12.97

