

Light Smasher - SLF 125 / HLF 125

Outdoor
Application

Page 43



Product description

Versatile, rotational, symmetrical floodlight suitable for use with high pressure Sodium up to 400W and high pressure Mercury up to 400W lamps with appropriate gear box.

Features

- Housing made of pressure die-cast aluminium for sturdiness and long life.
- High purity aluminium reflector electrochemically brightened and anodised.
- Different light beam angles can be obtained with corresponding lamp placements.
- Special heat-resistant glass cover which encloses the front side of the reflector.
- Rubber gasket securely fixed to make the luminaire rainproof.
- Non integral control gear which can be located separately away from luminaire for easy maintenance.
- Conforms to IP 54 protection.
- Conforms to relevant IS specifications.

Applications

- Area lighting
- Monument lighting
- The control gear boxes to be used are
 - ZVX 320 / 150 for SON-T 150W
 - ZVX 330 / 250 for SON-T 250W
 - ZVX 340 / 400 for SON-T 400W
 - ZVX 280 I x HPL-N 250W 240W
 - ZVX 290 I x HPL-N 400W 240W

Installation

Universal mounting bracket allows wall or surface mounting.

Compliances

- IP 54
- Class I

Outdoor | Light Smasher - SLF 125 / HLF 125

Technical data

Type	For lamp	Nominal voltage (V)	Main current (A)	Nominal power factor
SLF125 1xSON-T250W	1 x SON / SON-T 250W	240	1.40	> 0.85
SLF125 1xSON-T400W	1 x SON / SON-T 400W	240	2.25	> 0.85
SLF125 1x150W	1 x SON / SON-T 150W	240	0.85	> 0.85
HLF125 1x250W	1 x HPL-N 250W	240	1.35	> 0.85
HLF125 1x400W	1 x HPL-N 400W	240	2.15	> 0.85

Ordering data

Type	Ordering data	Quantity per box	Dimensions (mm)	Net weight (kg)	Gross weight (kg)	Volume (m3)
------	---------------	------------------	-----------------	-----------------	-------------------	-------------

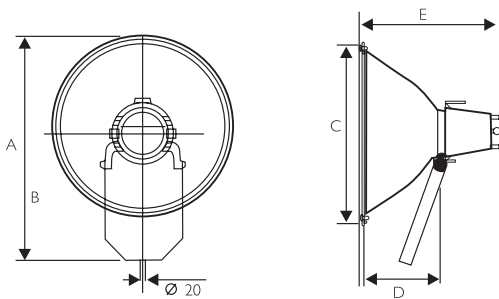
Housing

SLF115 1xMAX400W-E40	919115262255	1	235 x 240 x 220	1.20	1.5	0.0124
----------------------	--------------	---	-----------------	------	-----	--------

Reflector

GLF115 R	919115926207	1	670 x 240 x 220	4.95	8.43	0.0353
----------	--------------	---	-----------------	------	------	--------

*To be used with separate CG Box.



	A	B	C	D	E
SLF 125	125	726	592	225	445

Technical Drawing

